

Royal Exclusiv Aqua-Inspired, Perfectly Designed

Aquarien-Anlagenbau Christian Walter GmbH & Co. KG
Vorgebirgsstr. 28 // 50389 Wesseling // Germany

Fon +49(0)2236/88055-0 // Fax +49(0)2236/88055-20
info@royal-exclusiv.de // www.royal-exclusiv.de



Operating and maintenance manual for Bubble King® Supermarin
For all Bubble King® Supermarin 160 skimmer

v1.0

ENG





Operating and maintenance manual for Bubble King® Supermarin 160 For all Bubble King® Supermarin 160 skimmer

*The Bubble King® SuperMarin 160 is equipped with a Red Dragon® X (RDX) pump;
the manual may show other pump models. For information regarding the handling and
care of the RDX, please refer to the separate RDX manual.*

1. Commissioning	2
1.1. Adjusting the Adjustable Red Dragon® X Pump	4
1.2. Adjusting the Water Level Cutoff Line in the Skimmer Bowl with the Wedge Tube	4
2. Maintenance	5
2.1. Disassembling the Red Dragon® X Pump (RDX)	5
2.2. Descaling and Cleaning the RDX Impeller	6
3. Disassembling and Cleaning the Skimmer Body	7
4. Care of Resonator/Silencer	7
5. General Information	9
5.1. Ozone Connection	9
5.2. Good to Know!	9
6. Possible Sources of Error	9
7. Claims for Defects and Replacement, Exclusion of Liability	11
8. Manufacturer's Declaration	12
8.1. Manufacturer	12
8.2. Information and Support	12

Notes on this manual

Please read this manual carefully before installing the device. Only then may the skimmer be operated. This will prevent questions and problems. As soon as you turn on the skimmer, confirm that you have read and understood this manual. If you do not understand anything, please contact your supplier/dealer before operation.

1. Commissioning

Please remove the Bubble King® Supermarin from the packaging and inspect the skimmer for any shipping damage, which must be reported immediately to your local dealer within 24 hours.

The Bubble King® Supermarin 160 is pre-installed and ready for use and can be installed immediately in a filter sump or similar. Please first drain the reservoir to familiarize yourself with the device.

The minimum water level in the BK Supermarin® should not be **less than 15 cm** and **not more than 25 cm**.
The ideal water level is 20 cm.

Now plug the power cord into the designated outlet. We expressly point out that submersible pumps generally require a residual current device (RCD) protected power supply. We also recommend a surge protection power strip. This prevents electrical shock in the event of a short circuit in the power supply or a voltage surge. The pump has a ballast/power supply that regulates the voltage down to direct current (DC) and 12/24 V and is therefore absolutely safe.

After starting the skimmer/needle wheel/disperser pump, a foam cushion will form in a relatively short time, as shown in the illustration (*skimmer after commissioning of the disperser pump*).



Please let the skimmer run in this mode for a few hours without the pot on.

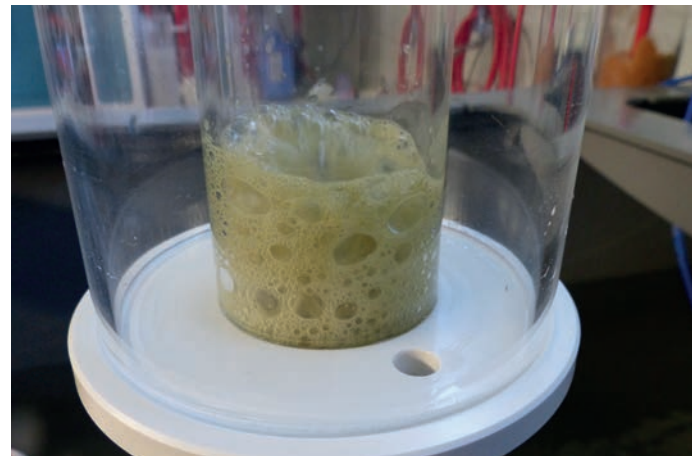
New skimmers generally need some time before they are even able to produce a solid foam.

New skimmers can contain a variety of substances that inhibit foam formation, such as adhesive residue, grease, and similar contaminants. Depending on the contamination of your aquarium water, it can take between two minutes and a week for the first solid foam to form.

It is not possible to make a general statement about when a skimmer is fully run-in.

Once the foam is sufficiently firm, place the container on the column. Please ensure beforehand that the internal O-ring is firmly seated in the groove, without any distortions, ripples, or similar irregularities.

These could lead to a slight leak. Once the foam is firm enough, you can adjust the water level in the skimmer by turning the wedge tube left or right (*see illustration, skimmer after adjusting the water level with the wedge tube*).



There is a small marking on each of the red wedge tube and the white T-piece. This serves as a guide for adjusting the wedge tube.

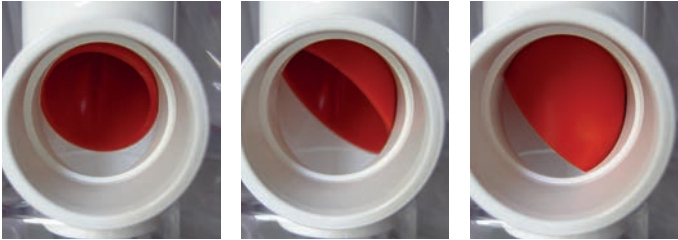
Royal Exclusiv Aqua-Inspired, Perfectly Designed

Aquarien-Anlagenbau Christian Walter GmbH & Co. KG
Vorgebirgsstr. 28 // 50389 Wesseling // Germany

Fon +49(0)2236/88055-0 // Fax +49(0)2236/88055-20
info@royal-exclusiv.de // www.royal-exclusiv.de



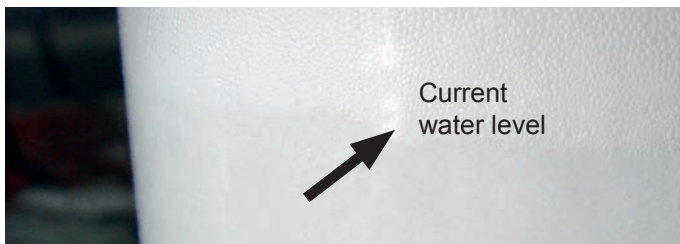
The function of the wedge tube is illustrated in the images below.



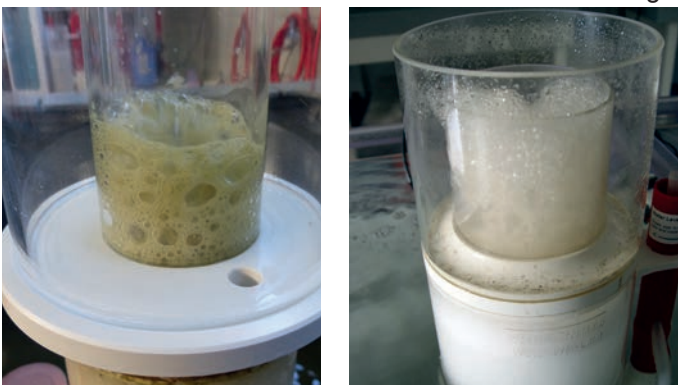
The water-air separation line is the area where the transition from wet water foam to dry foam occurs. If possible, the water level should not exceed the maximum water separation line, which is usually located approximately at the beginning of the riser tube. This maximum line ensures dry skimming.

However, this line can be exceeded if necessary, as our recommendation is a guideline and not a specification. It is up to the user whether they want to skim dry or wet.

However, the user should be aware that an excessively high separation layer makes the Bubble King® skimmer very sensitive. It can overflow more frequently if impurities enter the water, such as fatty food, various trace elements, or fresh filter media.



In the figure (*Current water level*) the water level line can be seen approximately 5 cm below the skimmer pot. If the skimmer produces sufficient dry foam, it is recommended to grease the outer end of the riser tube and the inner foam ring.



This prevents the foam cup from filling with solid, dry foam, as the bubbles immediately burst upon contact with fat. This ensures that only skimmed-off absorbate collects in the absorbate pot, not solid foam that could potentially escape from the vent holes in the pot.



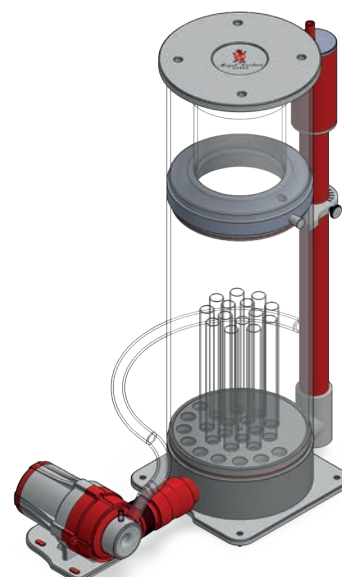
The image above right shows the ideal condition: not too dry and not too wet. This condition must be maintained. Be sure to operate with the outlet open for the first few days. Only install the plugs after the „run-in“ period. Image of open outlet next to ideal condition.

Now let the skimmer run until the absorbate cup is filled with skimmed liquid (*see image, filled skimmer cup*).

All Bubble King® skimmers have a so-called absorbate drain device. There is a 10 mm hole in the bottom of the cup, which is sealed with a silicone plug. This device serves as a transfer point. The customer can install a drain here, e.g., with a small ball valve, to drain the absorbate, which makes cleaning the cup easier.

This prevents the skimmer cup from filling up with solid, dry foam, as the bubbles would immediately burst upon contact with fat. This means that only the skimmed absorbate collects in the absorbate pot and not solid foam, which could possibly escape from the pot's degassing holes.

Note: Please do not wait too long to clean a full pot.



For more information, look at the net at www.royal-exclusiv.de. Simply enter the part number or name into the search box or email to: info@royal-exclusiv.de.

All information without guarantee. We try our best, but printing errors reserved.

1.1. Adjusting the Adjustable Red Dragon® X Pump

A skimmer works best when a precisely defined amount of water and air is introduced at the lowest point of the skimmer with as little turbulence as possible. The Bubble King®-Red Dragon® pumps have a so-called ideal operating point. This optimal point varies from model to model.

3 Important Points to Consider When Adjusting the Pump

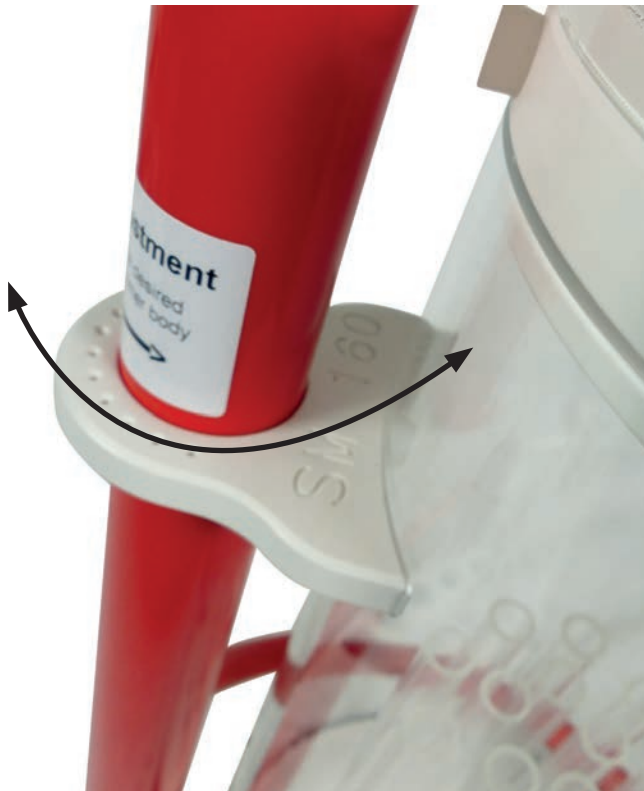
The wedge tube regulates the water level in the skimmer and thus the quality of the collected material, as well as how quickly and how much the skimmer should skim.

The pump control via the controller determines the air/water supply to the skimmer.

With this skimmer model, the pump can be fully extended. **However, we recommend going slightly over half the speed..**

The water level in the filter should be set fix as possible.

By turning the wedge tube the water level in the skimmer rises or falls



This optimal operating point can, of course, be exceeded or undercut by the customer. A lower setting is advantageous when skimming performance is no longer desired, such as in tanks with only stony corals and very few fish. Increasing the water flow is always recommended in extremely high fish populations or in the event of a disaster. A dead large Tridacna, sporulating algae, or signs of poisoning, such as those that can occur in dying sea cucumbers, or similar reasons, necessitate immediate, rapid, wet skimming.

1.2. Adjusting the water level in the skimmer bowl with the wedge tube

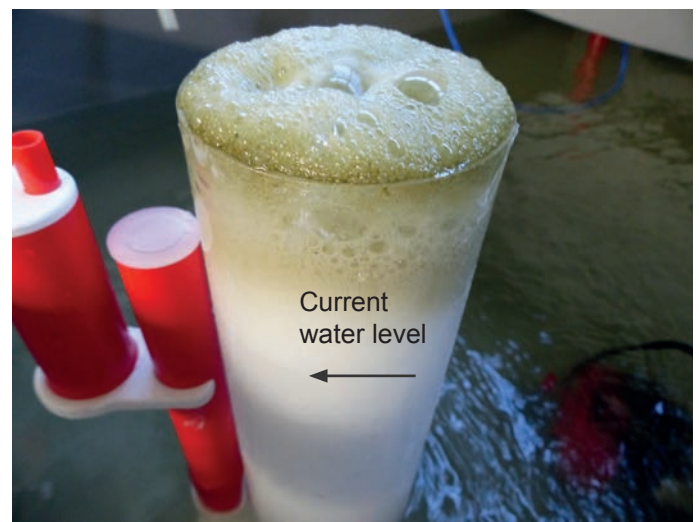
It is also possible to adjust the skimmer's water level with the wedge tube. The wedge tube is used for fine adjustment or flooding the bowl. Flooding in this case means cleaning the Bubble King® bowl without removing the bowl itself.

The wedge tube is then almost closed, causing the water level to immediately and abruptly rise.

The riser tube can now be cleaned with a brush, pushing the dirt in the riser tube directly into the bowl without flowing back into the filter.

The water level can be finely adjusted by turning the wedge tube left or right.

The standard version of the skimmer features a bubble trap, which, as the name suggests, eliminates any micro-bubbles.



2. Maintenance

We recommend cleaning a Bubble King® at regular intervals and checking the needle wheel for any foreign matter. It is not necessary to remove the skimmer from the filter to check the needle wheel.

Disconnect the skimmer from the power supply by unplugging the power cord. Now pull the suction nozzle (pictured right) out of its groove. Turn the skimmer toward you and visually inspect for any snail shells, activated carbon pellets, mussels, filter cotton, or food residue caught in the first row of needle wheels. If there is a significant buildup, as shown in the lower right picture, the pump must be disassembled.

Red Dragon® Bubble King® pumps, in this case the RDX, have a software-supported automatic control system; the electronics continuously measure the energy consumed. If, for whatever reason, power consumption increases (e.g., due to calcification and the resulting stiffness of the plain bearings), the electronics interpret this as a fault, in this case, an ER7, and shuts down the pump for safety reasons. For this reason, it is impossible for a Bubble King® pump to burn internally or suffer other damage, such as a short circuit due to overload; the power supply also ensures this. The pump can be restarted by switching it on and off.

If a Red Dragon® pump has shut down, there is a problem that needs to be resolved. Typically, this is due to a cleaning interval or a descaling procedure that must be performed now.

IMPORTANT:

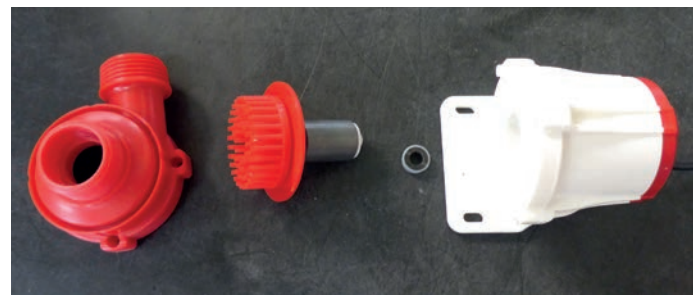
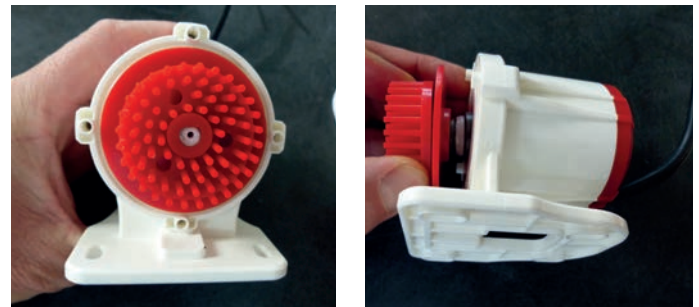
Limescale or heavy contamination may cause engine damage and therefore are **not** covered by the warranty!

2.1. Disassembling the Red Dragon X Pump (RDX)

After disconnecting the pump from the silicone hose, remove the suction nozzle from the designated opening. Place the pump on a soft surface or a towel and begin disassembly.

A small/medium Phillips screwdriver is required for complete disassembly.

Caution: The screws are made of soft Grade 2 titanium, while the pumps are made of plastic. Please tighten the screws only very lightly until the gap between the pump head and the body is closed. Overtightening the screws is unnecessary and could damage the thread in extreme cases. The housing screws are made of titanium and are therefore 100% saltwater-resistant.



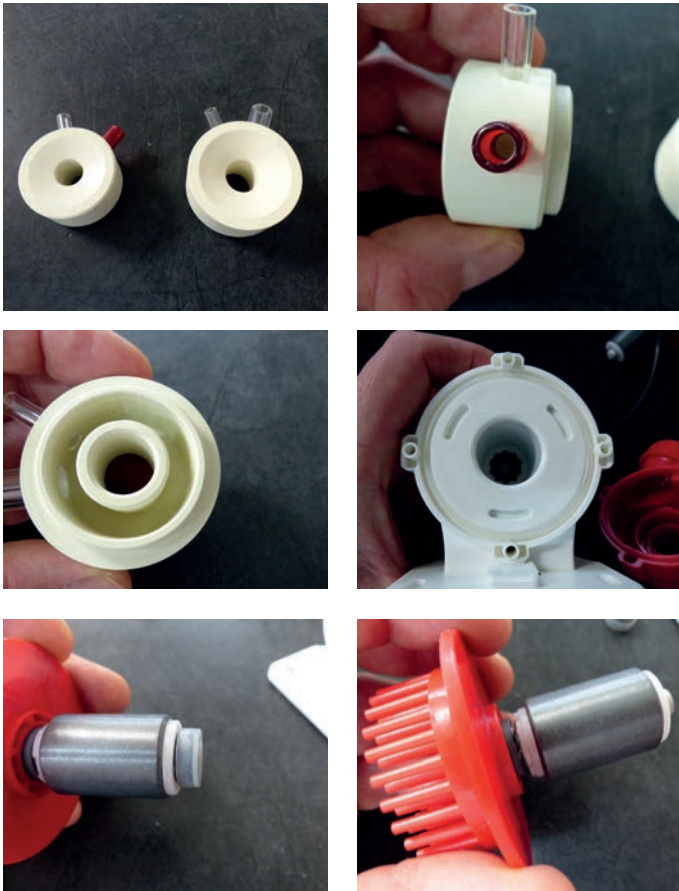
Please reach behind the disperser wheel with your fingers and gently pull the impeller out of its containment can guide. Clean the impeller with a pointed, smooth object, such as a nail file or similar.



Please now descale the impeller assembly with a suitable descaling agent.

Please **do not use hydrochloric acid, even in diluted form!**

Otherwise, the pump could be damaged.



Suitable descaling agents include formic, acetic, or phosphoric acid, as well as commercially available descaling agents commonly used to descale household appliances such as hot water heaters and coffee makers. The motor housing should also be descaled.

Coarse, greasy deposits should be brushed off with a medium-coarse brush under running tap water before descaling. Then, check that the bearing disc rotates smoothly. Pay particular attention to the disc during descaling. The black bearing plate must rotate smoothly.

Caution:

When using descaling acids, please observe the relevant safety regulations, which are explained on each sales package. Be sure to wear appropriate protective clothing and goggles.

We therefore recommend checking the Red Dragon® pumps after just three months to determine the possible maintenance intervals, which can be between 2 - 12 months depending on the degree of precipitation.

If the rotor assembly is extremely calcified, **carefully** insert a small flat-head screwdriver between the motor block and the rotor cover and loosen the plate.

2.2. Descaling and Cleaning the RDX Rotor

Important note :

The rear bearing bushing requires special attention, as this is where most mistakes are made.



If the rear bearing bushing is sitting on the shaft when removing the rotor assembly, the bearing must be removed from the shaft. *Image above: Bearing bushing after being removed from the shaft. It should be reinstalled in the same way.*

The bearing bushing is **loosely** placed on the shaft, and then the rotor assembly is inserted into the motor. The bearing is not firmly seated in the bearing seat. The plain bearing bushing must be reinstalled before reassembling the rotor assembly. Once the bearing has been installed in the designated groove, the silicone protective ring should be intact. If it has any cracks or holes, please replace it. After thoroughly rinsing all descaled parts with tap water, it's time to reassemble.

3. Disassembling and Cleaning the Skimmer body

Bubble King® skimmers can be completely disassembled. Thanks to new manufacturing processes that operate with an accuracy of 100 µm, all CNC-machined parts are provided with zero-fits. This means that the parts are largely no longer glued together, but rather have very precise fits. There are only one screw on the skimmer itself.

Please disassemble the skimmer as far as possible while it is still inside the filter. Remove the pump and silencer (see pictures on the next page), pull out the wedge tube, and lift the pot. Make sure the pot doesn't fall off to the side. Thoroughly clean the individual parts with soft materials, if possible, and descale if necessary.

Please do not use harsh, abrasive, or corrosive cleaning agents, as the Plexiglas parts are susceptible to scratching.

If not already done, loosen the silicone air hose from the designated connection on the silencer and pump nozzle using a twisting motion.

Note for optimal cleaning:

The skimmer column should be cleaned in tap water with liquid chlorine. Chlorine does not damage the column components.

If necessary, please only use new, original O-rings of the correct thickness and hardness. As O-rings age, their hardness changes very slowly; these O-rings should be replaced with new ones.

The surface of the seal should also be coated with silicone oil/grease. This increases the sliding properties when the pot hits the seal and ensures a reliable seal. The seal itself is made of extremely soft silicone and is permanently saltwater-resistant.

4. Care of the Resonator/Silencer

Bubble King® skimmers are extremely quiet. The air intake noise is reduced by a sophisticated resonator within the overall design. A resonator, also known as a Helmholtz resonator, reduces air intake noise through frequency and phase shifting. Royal Exclusiv® resonators are essentially maintenance-free because, unlike many other silencers, the air does not have to flow through filter media, but flows through the silencer without resistance.

However, it may occasionally be necessary to clean the inside due to **very dusty air** or **accidentally immersing**



the silencer **in salt water**, as salt crystals can cause a gradual blockage.

For manual inspection, please blow through the resonator and check for free movement. If you notice any resistance, please clean the resonator as shown below:

Open the silencer using a suitable screw driver or similar tool. *The image on the right shows the view into the opened resonator.* Thoroughly clean the resonator and reassemble it. The foam only serves as sound insulation and does not necessarily need to be replaced. The skimmer is now ready for use again.

Please ensure that you only tighten the screws slightly!

Royal Exclusiv Aqua-Inspired, Perfectly Designed

Aquarien-Anlagenbau Christian Walter GmbH & Co. KG
Vorgebirgsstr. 28 // 50389 Wesseling // Germany

Fon +49(0)2236/88055-0 // Fax +49(0)2236/88055-20
info@royal-exclusiv.de // www.royal-exclusiv.de



The resonator is not glued, but rather clamped into the groove. The silencer must be cleaned regularly. If the pump is stopped and the water level in the filter is extremely high, water can enter the resonator.

This is not a problem, as the water evaporates when the pump is restarted. Over time, the salt crystals can clump together and severely clog the silencer. Please check regularly every 1-3 months.



Remove the resonator - pull off the silicone hose - and replace it.



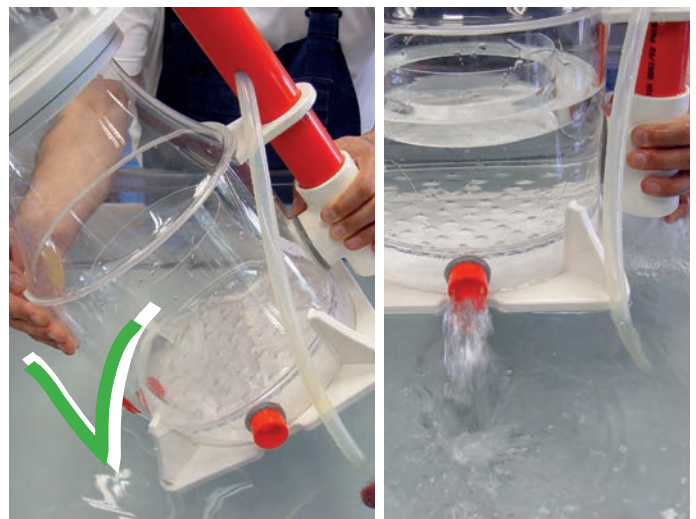
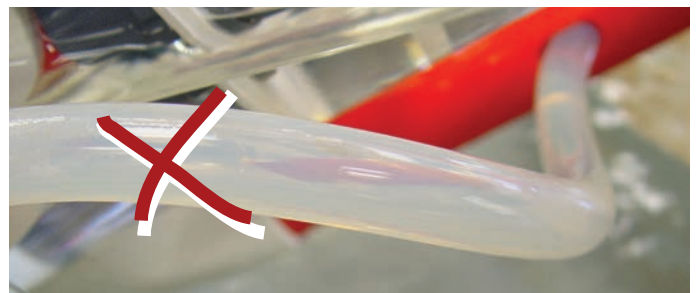
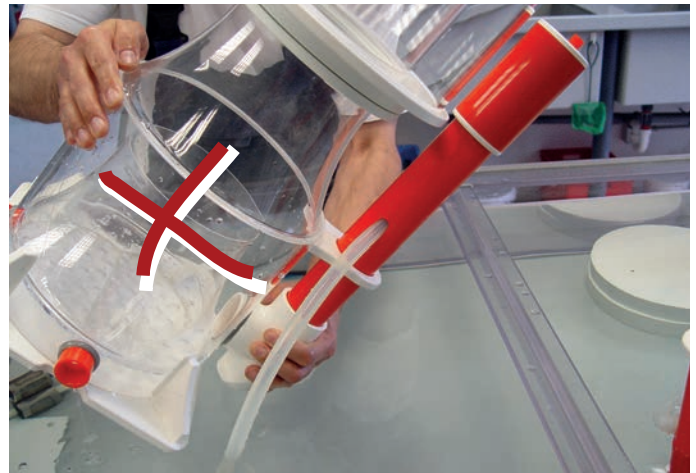
The opening of the silencer is shown in the picture.

The muffler inlay can now be rinsed with fresh water. However, the water must be completely dry before reinstallation or recommissioning!

Important note:

When removing the skimmer from the filter tank, it is essential to ensure that no salt water enters the silencer!

This can, among other things, lead to the formation of salt crystals later on, which can impair the silencer's function or cause unpleasant noises.



For more information, look at the net at www.royal-exclusiv.de. Simply enter the part number or name into the search box or email to: info@royal-exclusiv.de.

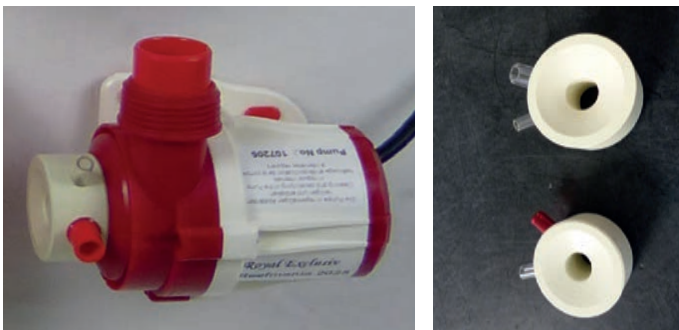
All information without guarantee. We try our best, but printing errors reserved.

5. General information

Important: Correct seating of the adjustable nozzle

The nozzle sits in a very precise groove and can be removed for cleaning purposes. It is very important that the nozzle is pressed back in after cleaning until it stops, as shown in *the image below*.

The nozzle must be firmly and tightly seated at the end of the groove. If the nozzle is not fully seated, it would have the same effect as if the screw-in nozzle were wide open, resulting in high water flow and turbulence in the skimmer.



5.1. Ozone connection

The RDX skimmer pump has a 6mm connection nipple on the nozzle, which can be used to attach a hose for ozone and connect it to the ozonizer if necessary. The negative pressure of the Bubble King® Red Dragon® pump is usually sufficient to automatically draw in the ozone. If the hose is too long, please use a small air pump to inject the ozone-air mixture.

Please **do not** attempt to connect the 10mm silicone hose from the Bubble King® pump directly to the ozonizer. **This will not work!** Ozone devices have far too high a resistance to directly connect a Bubble King® pump. The skimmer's performance would be suddenly reduced by 90%. The pump would be overloaded, and the motor's electronics would interpret this as a malfunction and automatically shut down the motor for protection.

With this skimmer model, the pump can be fully extended. **We recommend operating it at the upper third of its rpm.**

5.2. Good to know!

We expressly point out that the pump cannot be run dry. It is not permitted to briefly switch on the pump, even for test purposes, to check its proper operation. Damage to bearings and/or axles resulting from this is generally excluded from the warranty.

Royal Exclusiv® products are manufactured on state-of-the-art CNC machines. Our employees are all trained specialists in their field and work with the utmost care. Should you nevertheless have a legitimate complaint or suggestions for improvement, please contact Royal Exclusiv® customer service at info@royal-exclusiv.de. We will be happy to assist you.

Royal Exclusiv® guarantees a permanent spare parts inventory for at least 5 years.

6. Possible sources of error

The following information is important to achieve optimal skimming results:

1. Not all water is the same. Due to the different compositions, it may take a few days for the skimmer to skim properly. (*Especially with new products*)
2. Note the water level from ~ 150 mm to ~ 250 mm (**ideally ~ 200 mm**), this is the water level in the filter tank!
3. The water level in the skimmer is regulated by adjusting the wedge tube. This is where the amount of foam produced is set. (The water level **in the skimmer** is adjusted by simply turning it left or right.)
4. Does the skimmer produce a water-air mixture in the tube after switching it on? If so, the skimmer is working, and there is another reason for the skimming error.
5. The pump must not run dry, as this can lead to a total failure!
6. **Adequate pre-filtering** of the water **before** it enters the **skimmer** is recommended! This protects the pump from large particles such as snail shells or mussels, which can clog the needle wheel.

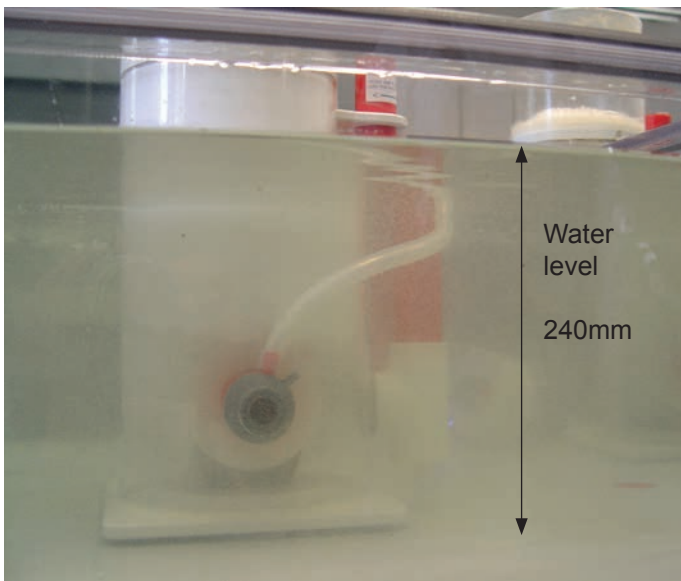
Depending on the water level in the filter tank, the Bubble King® Supermarin can be adjusted to the correct height to achieve optimal skimming results. (*See image on the next page.*)

You will find detailed information on the pump's operation and functions in the separate pump manual, depending on the model. Spare parts can be found on our website <https://www.royalexclusiv.net/>

***Subject to technical changes**

We wish you lots of fun and enjoyment with your Royal Exclusiv® skimmer. Your RE Team





**Bubble King®
SuperMarin 160
with injection
tubes**

Skimmer bowl
with lid
and seal

Silencer

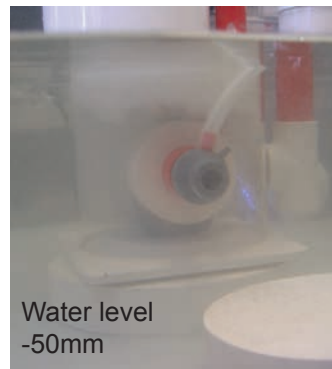
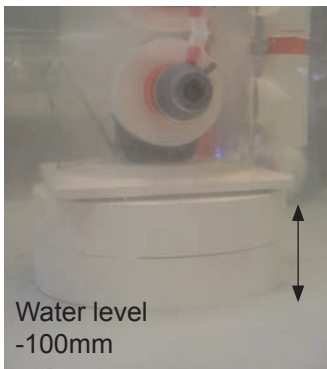
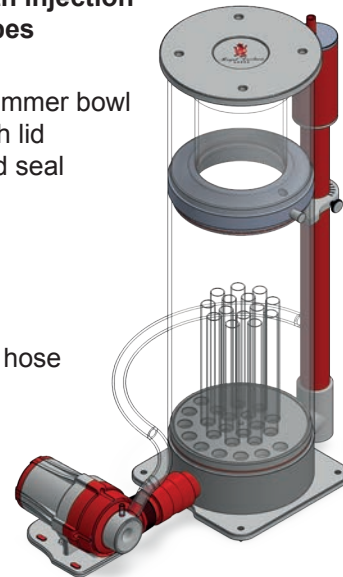
Wegde pipe

Air hose

Skimmer body
+ injection pan and
bubble straightener
with injection tube

RDX skimmer
pump

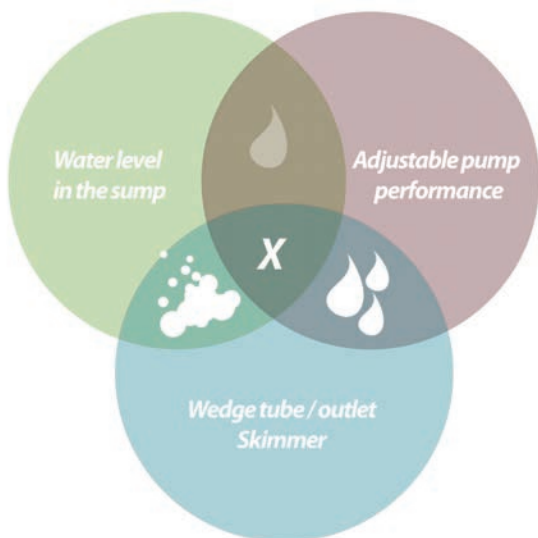
Base plate



Don't forget!

At least 20-30mm of
clearance is required
to
remove and clean the
entire skimmer bowl!

20-30mm



X *Perfect
skimming*

 *Dry
skimming*

 *Wet
skimming*

 *Overcooking*





7. Claims for Defects and Compensation, Exclusion of Liability

7. Claims for Defects and Compensation

7.1. We are liable for ensuring that our delivered goods are free of defects at the time of transfer of risk. However, minor deviations from the agreed quality or minor impairments of usability are irrelevant. The agreed quality, durability, and use of our delivered goods are based exclusively on the specifications, product descriptions, and/or operating instructions agreed in writing. Any additional information, particularly in preliminary discussions, advertising, and/or referenced industrial standards, will only become part of the contract if expressly included in writing. Our warranted properties expressly apply. We cannot accept warranted or promised properties stated by third parties. The properties expressly guaranteed in these operating instructions apply.

If the customer intends to use the delivered goods for purposes other than those agreed upon, they must carefully check their suitability and/or admissibility at their own responsibility. We exclude liability for any usability not expressly confirmed by us in writing. Any manipulation of the pump itself, the needle wheel or the electronics, as well as any attempt to change or influence the electronics, will immediately void the manufacturer's warranty.

Each user is responsible for the proper operation of their **Bubble King® Supermarin** skimmer. This manual does not release you from the obligation to use, install, operate, and maintain the product safely. By using this manual, you acknowledge that the manufacturer cannot be held liable under any circumstances for any property damage and/or personal injury that may occur as a result of use. This applies in particular to damage that can be expected from improper piping. Inadequate or complete lack of maintenance and cleaning intervals and the resulting possible damage are not covered by the warranty. This applies in particular to calcification (seawater) and sucked-in foreign matter (pond) such as sand/gravel, which can lead to damage to rotors, bearings, and containment shells. This damage is not covered by the warranty.

7.2. Our liability for defects is generally limited to subsequent performance. Subsequent performance, at our discretion, is either the rectification of defects or the delivery of defect-free goods. If subsequent performance is refused, is impossible, or fails, the customer has the right to reduce the price or, at their discretion, to withdraw from the contract.

Any increased expenses for subsequent performance resulting from the customer transporting the purchased item to a location other than the customer's branch after delivery shall be borne by the customer.

The manufacturer expressly limits the warranty to the skimmer itself. Damage beyond this, e.g., loss of fish caused by pump failure or other consequential damage, is generally not accepted. Each user is responsible for ensuring that backup units are available in the event of a pump failure.

7.3. The customer must carefully inspect the delivered goods immediately upon receipt – including for product safety – and report any obvious defects immediately in writing, and any hidden defects immediately upon discovery. The customer must immediately report any transport damage to the carrier within 24 hours. Failure to comply with the obligation to inspect and give notice of defects excludes any claims for defects.

7.4. Furthermore, we are not liable for the consequences of improper handling, use, maintenance, and operation of the delivered goods by the customer or their assistants, nor for normal wear and tear. This applies in particular to the consequences of thermal, chemical, electrochemical, or electrical influences, as well as violations of our operating instructions. The same applies if the defects are due to interventions or instructions by the customer not confirmed by us.

7.5. Our liability for gross negligence is limited to claims for injury to life, limb, or health, to claims under the Product Liability Act, and to claims arising from the culpable breach of essential contractual obligations that jeopardize the purpose of the contract. Furthermore, our liability for grossly negligent breach of essential contractual obligations is limited to the damage that we could foresee and typically occur at the time of conclusion of the contract.

Damage that is clearly due to improper handling of the goods is generally the responsibility of the customer. When returning goods, the customer must ensure that the



goods are packaged in a shatter-proof manner. He is fully liable for any damage caused by improper packaging.

7.6. Claims for defects against us expire within one year of delivery of the goods to the customer. The same applies to claims for damages, regardless of the legal basis.

The limitation of the limitation period does not apply to claims based on fraudulent concealment of a defect, to claims under the Product Liability Act, to damages resulting from injury to life, limb, or health, or to other damages based on intent or gross negligence.

7.7. If, during our inspection of a defect reported by the customer or during our rectification work, it becomes apparent that the complaint was made through gross negligence and without justification, we may demand appropriate compensation for the inspection and/or repair work. The customer has the right to refuse a necessary repair and request the return of the skimmer. In general, the inspection of the defect is subject to a flat-rate fee if it turns out that the customer is responsible for the reported defect.

7.8. Spare parts

Our obligation to retain/supply spare parts is limited to a period of five years after delivery. Our respective list prices apply to spare parts.

7.9. Disposal

We offer our customers the option of taking back, free of charge, within Germany, our old devices covered by the German Electrical and Electronic Equipment Act (ElektroG) that were placed on the market after August 13, 2005, and of recycling/disposing of them. If the customer does not allow us to dispose of the equipment, they assume the obligation to dispose of the equipment in accordance with statutory regulations at their own expense and indemnify us against the obligation under Section 10, Paragraph 2 of the ElektroG (manufacturer's obligation to take back the equipment) and any related third-party claims.

7.10. Subject to Changes

The manufacturer reserves the right to make hardware and software changes to the products at any time without prior notice, provided that this improves the operational safety and quality of the skimmers. No claims can be made if, for example, the design, functions, or performance of the skimmers have fundamentally changed. It is guaranteed that the promised properties of the skimmer are always maintained.

8. Manufacturer's Declaration

Claims against **Royal Exclusiv**® based on the products described in this manual are governed exclusively by the **Royal Exclusiv**® warranty terms and conditions.

Due to continuous technical improvements and innovations, product specifications may differ from the information provided in this manual.

8.1. Manufacturer

Royal Exclusiv® Aquarien - Anlagenbau
Christian Walter GmbH & Co. KG
Owner: Christian Walter

Vorgebirgsstr. 28 // 50389 Wesseling // Deutschland

Fon +49(0)2236/88055-0 // Fax +49(0)2236/88055-20

info@royal-exclusiv.de // www.royal-exclusiv.de

Made in Germany

Royal-Exclusiv® EAR-Number: WEE.Reg.Nr. 83082352

8.2. Information and Support

Thank you for choosing a Bubble King® Supermarin protein skimmer from **Royal Exclusiv**®. The Bubble King® Supermarin protein skimmer is a high-quality product, manufactured to the highest standards of craftsmanship on state-of-the-art CNC machines. This manual is intended to help you set up the product and perform the necessary adjustments and maintenance.

To ensure you enjoy your device for a long time, we ask you to read the operating and maintenance instructions carefully and follow our recommendations.

Royal Exclusiv® guarantees a minimum of 5 years of spare parts availability for Bubble King® Supermarin skimmers.

Should the quality of your device ever not meet the high expectations you associate with the **Royal Exclusiv**® name, please contact the retailer from whom you purchased this product. This is usually the fastest and best way. Alternatively, you can also contact support on our website: <http://www.royal-exclusiv.de>

Royal Exclusiv Aqua-Inspired, Perfectly Designed

Aquarien-Anlagenbau Christian Walter GmbH & Co. KG
Vorgebirgsstr. 28 // 50389 Wesseling // Germany

Fon +49(0)2236/88055-0 // Fax +49(0)2236/88055-20
info@royal-exclusiv.de // www.royal-exclusiv.de

